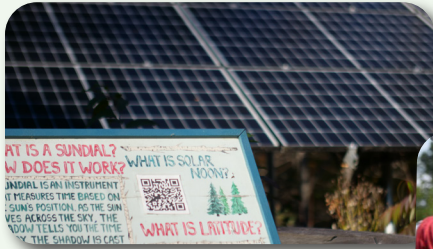


PAREI 2020 & 2021 Annual Report



The Many Sides of PAREI





Message from Zak (Board President) & Sandra (Director)

Dear Friends,

Thank you to our members, donors and volunteers who have supported us over the past two tumultuous years. Despite the disruptions, this 2020 and 2021 Annual Report offers positive stories and examples of the work you have done to heighten your sustainability goals. Collectively, these efforts are creating a stronger, healthier, and more resilient community.

The Covid-19 pandemic has been challenging. At PAREI, our dedicated board of directors, staff, volunteers and sub-contractors have stood firm in our commitment to our mission and our diverse programming – the Many Sides of PAREI – that uniquely address our energy, community, food, and climate challenges.

Posed with identifying new ways to improve our community's sustainability, PAREI rolled out Little Gardens Everywhere connecting and teaching gardeners with the goal of increasing the amount of foods grown (and cooked) locally. We worked with business owners to access USDA Rural Development's technical assistance and solar financial grants. We played a key role in creating a member-partner working group at the NH Electric Cooperative to ultimately produce a carbon emissions reduction plan. We worked with 14 PAREI members and one non-profit to install 153kW of clean solar PV energy.

We thank those of you who moved back to our community or are here for the first time, who tried out the Many Sides of PAREI. We thank our longstanding members who chose to renew or increase their membership level. We thank the Covid emergency funders and the hundreds of Local Foods Plymouth buyers who bolstered our local farmers by choosing to source their food locally.

Your support and your actions are the helpful hand PAREI, our community, environment and local economy needed in 2020 and 2021. The stories in these pages are your stories. Join us in being proud of what we've accomplished together.

Stay strong and active,

Zak Brohinsky and Sandra Jones

Mission & Strategy

Mission: The Plymouth Area Renewable Energy Initiative (PAREI) encourages and promotes energy conservation, energy efficiency and the use of renewable energy in the Plymouth region by offering programs and resources that encompass energy equity, energy education, community building, professional solar energy services and local food sourcing. We strive to be a role model for our state and region by openly sharing our program models and lessons learned.

Strategic Planning: We'd like to thank the NH Charitable Foundation for a three year community impact grant to advance our strategic plan. We are improving PAREI's financial longevity by establishing a development committee, creating a major gift program and hiring a development manager in 2022. We are improving membership engagement to increase our community presence and connections by starting a volunteer newsletter and reaching out to younger generations. We are re-thinking our public interface so we can better communicate how our varied programming supports our community's clean energy and sustainability goals. To view PAREI's strategic plan visit: plymouthenergy.org/about-us.



WHAT WE DO

EDUCATION & COMMUNITY BUILDING

- Energy Exchanges
- NHSaves Button Up Workshops
- Local Foods Plymouth
- Internship Program
- Solar Tours
- Little Gardens Everywhere Hands-on Workshops

CONSULT & ADVISE

- On-site Solar Assessments
- Home Energy Savings Consultations
- Local Energy Advisor Network
- Utility Incentive Programs
- Project Development

INSTALL & MAINTAIN

- Residential and Non-profit Solar Installations
- Solar IT Services
- Solar Thermal Assessments and Repairs
- Team of Experts

LOCAL FOOD SOURCING

- Local Foods Plymouth
Year Round On-line Marketplace
- Food-Sharing Program
- Educational Outreach

SHARE & INSPIRE

- NH Solar Shares' Community PV Arrays
- Advocacy
- Best Practices
- Community Partnerships
- PAREI Resources Equipment Lending
- Kitchen Inspired Cooking Show



Member Highlight

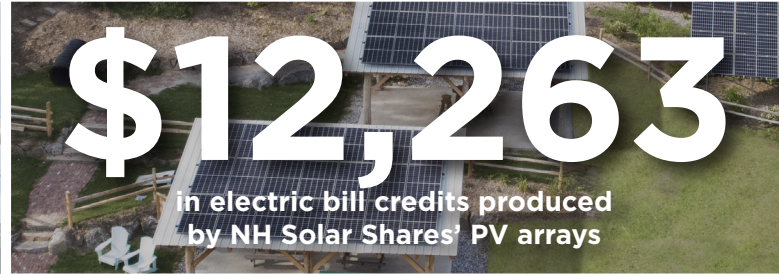
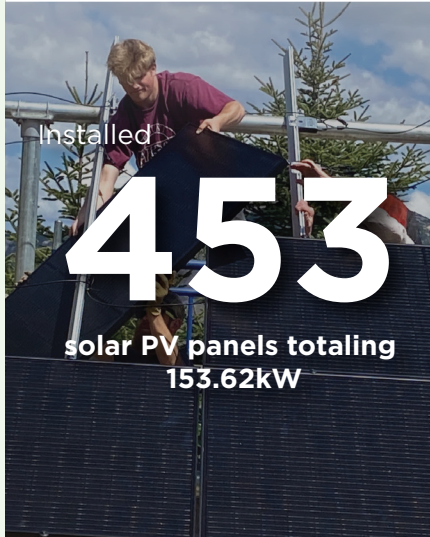
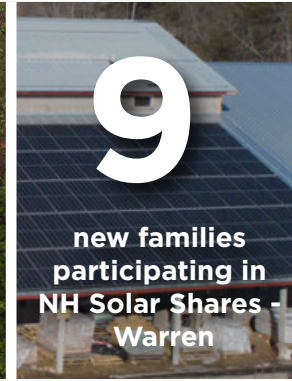
Jane Kellogg and Ron Reynolds

“Through our association with PAREI, we have been inspired to make changes to our home and life

choices based on PAREI’s influence and expertise in living more sustainably. Since becoming members in 2004, when we first participated as volunteers at a Neighborhood Solar Energy Raiser, we have supported the ever-widening array of resourceful community programs that PAREI has developed. From the early days of Energy Raisers to today’s Many Sides of PAREI; this group of dedicated, smart, hard-working people continues to evolve through steady, innovative and careful leadership.

We’re proud to be donors and participants of this vibrant community effort.”

2020 & 2021





Local Foods Plymouth One of PAREI's Many Sides since 2006

The last two years most people have experienced a great deal of change, and Local Foods Plymouth (LFP) is no exception. In March of 2020, when the country shut down, we realized that our on-line local food buying service was more relevant than ever and keeping it running was our way of helping the community stay connected. LFP shut down for

only one week so it could adjust and make plans for operating safely. We organized a crew of hardy volunteers and set up a curbside pick up. Each week we refined our process to make the next farmers' drop off, buyer pick-up and home deliveries run smoother. We were assisted by COVID emergency grants from the NH Charitable Foundation and the State of NH.

At the end of 2019, LFP hit an all-time low with only 15 orders a week. After the pandemic began, purchases jumped to 60 and some weeks over 100 orders. As the numbers grew, LFP staff and volunteers were energized by the community's support for local farmers and the economic and environmental benefits of eating locally. As the LFP customer base increased, so did our farmers and vendors – many seeking out new revenue streams – such as the popular Nourish Food Truck. Our participating farmers and vendors grew from ten to today's thirty-six. From March, 2020 through November 4, 2021, weekly sales generated \$220,830 for our local farmers and vendors.



Local Foods Plymouth would not be where it is today without all of you, our buyers, advocates, volunteers, and donors. Your increased support of PAREI's local foods' mission has strengthened the program and has helped LFP build a stronger presence and spread new and deeper roots into the community. LFP is now better positioned to offer a wider variety of NH grown and produced foods, make regular website improvements, improve our home delivery services, encourage SNAP recipients to use our services and offer marketing assistance to farmers to build their social media presence.



In 2022, with the goal of reducing food waste and widening the availability of locally grown food to everyone, LFP farmers will have the opportunity to take part in LFP's volunteer gleaning program or donate a portion of their harvest at the LFP weekly drop-off. Gleaned and harvested donations will be shared the same day with local non-profits such as the Plymouth Senior Center and the Bridge House homeless shelter. (A big thanks goes to Bank of NH for a \$5k grant to support LFP's food sharing program).

Since 2006, Local Foods Plymouth has been an important resource for fulfilling PAREI's mission. Choosing to include more locally grown foods in our diets is one of many ways PAREI members can reduce their overall carbon footprint. By purchasing food that doesn't travel across the country, uses less packaging, supports fair labor, reduces food waste, we can reduce our foodprint and make a local impact. To learn more about our farmers, visit the LFP Facebook page. If you would like to receive the LFP weekly newsletter or have questions about how to shop on the LFP website, e-mail: localfoodsplymouth@gmail.com.





Many new faces answered the call to support PAREI's programming. Shown here: Phoebe Howe - Volunteer of the Year, Justin Hardesty - Board Member, Sam Howe - Board Member, Meagan Fontaine - LFP Program Assistant, Erin Gillespie - PSU Intern, Eklutna Kenney - Former Communications Coordinator, Marianna Fishman - LFP Co-Manager and Little Gardens Coordinator, Robbin Adams - Office Manager and Button Up Workshop Coordinator, Brandon Miller - LFP Co-Manager, Sandra Jones - Director, and Tara Bryson - LFP Program Assistant.



"LFP is a gem in our wonderful Plymouth community. As someone with an elevated COVID-19 risk profile, it was helpful to have a local food resource available on-line that offered home delivery. It is our joy as a couple to support a local non-profit that, in turn, benefits so many local farms, dairies, and businesses."

Scott Meyer MSW, Ph.D., NH LICSW, BCD,
Professor Emeritus of Social Work at PSU



Phoebe Howe - 2020 Volunteer Award

"I volunteered for Local Foods Plymouth for one year for a few hours on Thursday afternoons. I would greet customers, bring orders to their car and pack orders when needed. The position evolved as I learned more about LFP. It was a positive, fun experience. It was a nice break from my desk job, I was able to get away, do something different and meet new people. I got a lot out of the experience, especially - gratitude for the customers, the staff and the farmers!"



Moulton Farm Solar PV Project and NH Rural Renewables

Moulton Farm has been providing local foods to the Meredith community since the 1890s. Nowadays the sun is doing more than growing their crops, it's generating over 17,000kWH of clean renewable electricity every year. In December, 2020 the farm "planted" 44 solar panels on their equipment barn powering a portion of the electricity needed to run their farm stand.

Solar energy is an abundant source of power that decreases the amount of harmful emissions released into the atmosphere. It plays an important role in displacing electricity generated by fossil fuels such as coal and oil. Solar energy saves money too. Moulton Farm will save over \$3200 a year in electricity costs.

Installing solar at Moulton Farm was inspired by Carl McNall. He was a strong advocate for solar and a PAREI board member since 2007. Carl was passionate about promoting the use of solar energy because he wanted to leave his grandchildren a healthier planet.

The Moulton Farm project was made possible thanks to technical assistance from NH Rural Renewables (NHRR); PAREI is a technical advisor for small NH businesses participating in NHRR. The project was funded by Moulton Farm, State of NH Commercial Solar Rebate Program and the US Department of Agriculture's Rural Energy for America Program. The PV system was installed by Frase Electric of Tamworth, NH. To learn more about NHRR, visit "Programs" at plymouthenergy.org.



Little Gardens Everywhere Started in Memory of Chris Buckley

In late March, 2020, a group of concerned community members met together to explore what additional actions the Plymouth community could undertake to improve its resourcefulness during a crisis – a pandemic or climate crisis. Board member Chris Buckley, despite dealing with the ill effects from cancer treatments, took part in those Zoom meetings along with several others involved with PAREI over the years. Chris believed that eating locally grown food – be it food he and his family grew or that of

local farmers – played a huge role in making a community more sustainable and resilient.

It was Chris' influence that led PAREI in the direction of Local Foods Plymouth back in 2006. Now 14 years later, Chris was making the case to start a new program to teach people how to start a garden, share tools, pass on gardening tips and create community gardens one neighborhood at a time. He felt it was critical for us all to re-examine our food resiliency during the pandemic.

In July 2020, in Chris Buckley's memory, PAREI staff, student intern and Chris' wife, Jen Morris, along with several energetic community volunteers, took on the challenge to begin this new program naming it Little Gardens Everywhere (LGE). Its vision is to connect, inspire, and teach local gardeners with the ultimate goal of creating a more diverse and abundant local-food supply.

Over the last 18 months, Little Gardens Everywhere has offered the community many opportunities and people are signing up! LGE has a teaching plot at the Plymouth Cooperative Gardens where workshops were conducted about planting and harvesting garlic, composting, no-till gardening and how to put your garden to bed. They have organized several well-received Zoom workshops by master gardeners on topics such as Companion Planting, Successful Spring Gardening Tips and Winter Composting.

Inspired by the vision of Little Gardens, the Gardeners of Upper Mount Prospect in Holderness recently re-planted their garlic bulbs following a neighborhood pesto making party using the garlic they planted in their shared plot in the Fall of 2020. In addition, a local cooking show, "Kitchen Inspired," was started to teach people how to



Upper Mt Prospect Gardeners mulch their neighborhood garlic garden October, 2021

cook with their homegrown foods. In September 2021 our new LGE coordinator, Marianna Fishman, organized our first gleaning work session. They gleaned unharvested vegetables, flowers and herbs from the Plymouth Cooperative Garden (with permission) to share with the residents of the

Bridgehouse. LGE welcomes everyone to take part in Little Gardens' activities. To receive workshop info: littlegardensnh@plymouthenergy.org.



Kitchen Inspired

In 2020, the Kitchen Inspired cooking show was created by Little Gardens Everywhere to encourage and teach our community how to cook with locally produced foods. Each series features a local

chef who comes to our kitchen with their own culinary creation. Throughout the 30 minute episode the chef teaches our viewers how to cook their recipe step-by-step, enhance their cooking skills with professional tips, and how to select produce, herbs, mushrooms, and fruits from our local farms.

Jen Morris, shown here with local PSU chef Jeff Wooley, hosts the show at Inspire Café in Ashland which was recently featured on PBS. Local talent Dustin Smith from Nourish will be our featured chef for 2022. The show is filmed and produced locally in Ashland and airs on Facebook ([littlegardensnh](https://www.facebook.com/littlegardensnh)) and YouTube ([littlegardensnh](https://www.youtube.com/littlegardensnh)).

Go to plymouthenergy.org/kitchen-inspired.

Please join us by sharing, cooking, sponsoring, viewing or participating. All are welcome.



NH Solar Shares Update

NH Solar Shares picnic pavilions - located above the Common Man's Frosty Scoops Ice Cream Truck in Plymouth - saw a lot more action in 2021. Solar Shares' participants and volunteers created a hill-top picnic area, planted a crabapple tree and completed the solar trail that runs through the woods behind the ground mounted solar arrays. Little Gardens Everywhere volunteers worked with participants to prep and plant an edible garden of cukes, peppers, squash and pumpkins. Visitors to the area not only learned about solar energy but were encouraged to pick a pepper or two!

In partnership with the NH Electric Cooperative, PAREI started NH Solar Shares to add more clean energy on our local grid and to share the benefits of solar energy with our neighbors. The Plymouth community PV array was commissioned in October, 2018 and our second project on donated roof space at Appleknockers General Store in Warren was completed in November, 2019. In 2020 and 2021, nineteen local income eligible families received monthly solar energy bill credits totaling \$12,263. These credits will continue to accumulate as long as the sun keeps shining! (Solar PV panels are under warranty to produce power for 25 years.)

PAREI is currently making plans to build a third community PV array in the Holderness or Center Harbour area that will increase the number of families receiving solar credits. If you would like to participate in Solar Shares, e-mail sandra@plymouthenergy.org. If you are interested in making a donation specifically towards building this third project, visit the donation link at plymouthenergy.org and check off "NH Solar Shares".





Adopting PAREI's Motto:

Reduce before you Produce!

"We joined PAREI in 2020. We needed to address some energy issues in our home and at the same time wanted to do our part for the environment. We requested a solar site visit and learned PAREI's motto "Reduce Energy

before you Produce Energy". We learned about the NHSaves home weatherization program. We signed up immediately, had an energy audit and received a report that outlined recommendations to make our home more energy efficient. We chose to add more insulation to our attic, spray foam our basement sills, and improve our home's ventilation. We decided the expense for this work would be an investment in the future.

We replaced our old water heater with a heat pump water heater and added mini-split space heaters to rooms that lacked a good heat source. We also wanted to produce our own clean energy so we had PAREI install 14 solar PV panels. The home weatherization program run by NH Electric Cooperative paid 70% of the cost for the completed recommendations. The equipment rebates, cost share and IRS tax credits were very helpful in making our 'Reduce then Produce' project happen!"

Janet and Richard Metcalf

Board Of Directors

Zak Brohinsky
President

Jenny Highland, DO
Treasurer

Joan Turley
Secretary

Dick Hage
Member

Sam Howe
Member

Melissa Leszek
Member

Kim Lovett
Member

Financial 2020

Revenue

Solar, Energy Consulting, Other	\$ 273,239.56
Grants and PPP Loan	\$ 46,897.25
Donations	\$ 35,304.87
Local Foods Plymouth	\$ 140,820.32
Membership	<u>\$ 12,905.00</u>
Total Revenue	\$ 509,167.00

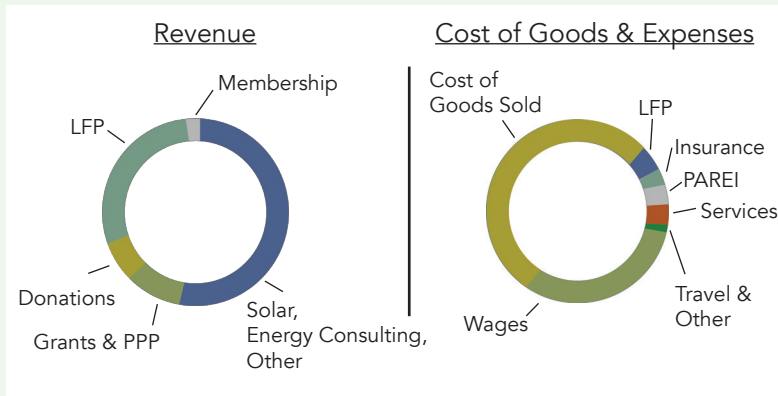
Cost of Goods & Expenses

Solar Programs	\$ 86,209.08
Subcontractors	\$ 73,610.43
Local Foods Plymouth	<u>\$ 116,697.25</u>
Total Cost of Goods	\$ 276,516.76

Expenses

LFP Operations	\$ 22,156.40
PAREI Operations	\$ 16,454.93
Services	\$ 18,985.01
Insurance	\$ 4,325.81
Travel	\$ 1,670.56
Other	\$ 5,746.41
Wages	<u>\$ 163,287.58</u>
(LFP and PAREI Programs)	
Total Expenses	\$ 232,626.70

2020 Net Revenue \$ 23.54



Financial 2021

Revenue

Solar, Energy Consulting, Other	\$ 321,996.44
Grants and PPP Loan	\$ 59,100.00
Donations	\$ 26,273.65
Local Foods Plymouth	\$ 161,342.59
Membership	<u>\$ 11,977.25</u>
Total Revenue	\$ 581,415.93

Cost of Goods & Expenses

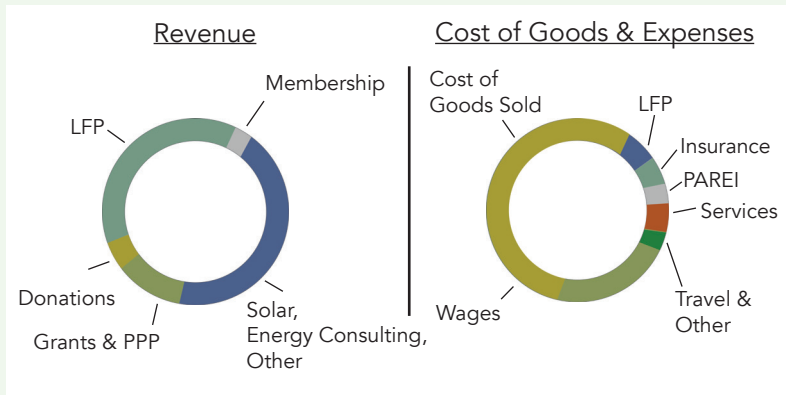
Solar Programs	\$ 115,520.50
Subcontractors	\$ 93,220.53
Local Foods Plymouth	<u>\$ 134,680.27</u>
Total Cost of Goods	\$ 343,421.30

Expenses

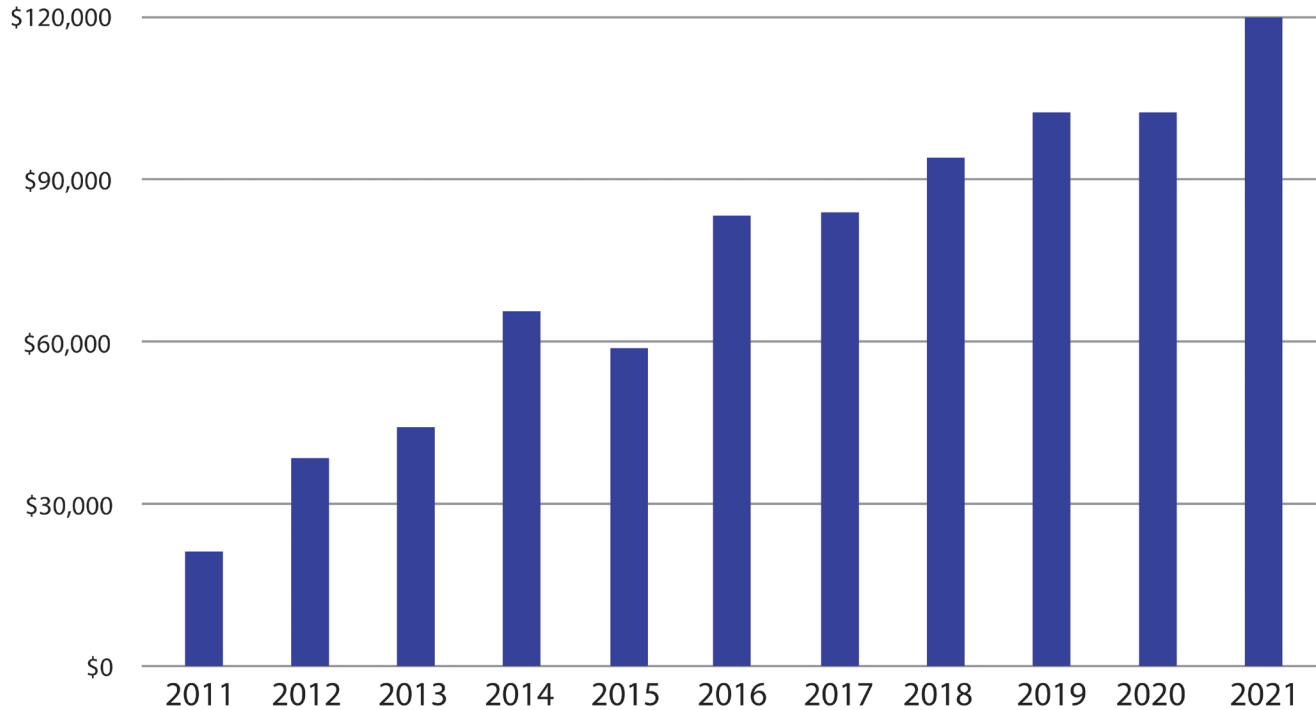
LFP Operations	\$ 20,094.79
PAREI Operations	\$ 16,366.44
Services	\$ 23,077.41
Insurance	\$ 5,824.10
Travel	\$ 2,501.60
Other	\$ 6,499.91
Wages (LFP and PAREI Programs)	<u>\$ 145,951.94</u>
Total Expenses	\$ 220,316.19

2021 Net Revenue

\$ 17,678.44



PAREI Total Equity 2011 to 2021





McNall Endowment Fund

The Carl McNall Endowment Fund was named to remember Carl

who served on the PAREI board for 14 years up until he passed away in March, 2020. Carl cared deeply about the financial health and continuity of PAREI's programming and services. To date we have raised \$12,175 toward our goal of \$500,000 for the Endowment Fund. In 2021, the PAREI finance committee created an investment policy and engaged an investment advisor. We'd like to thank Tim Dempsey of DHK Financials of Portsmouth for his free financial consulting as we take on this ambitious goal. The fund will strengthen PAREI's foundation so we can remain an avenue for action by future environmental, climate and community leaders.



Looking Ahead

Increase the number of community members involved in our programs and services.

Partner with the NH Electric Cooperative to increase the percentage of renewable energy feeding our local utility grid.

Increase members' use of our energy related lending items.

Add a specific outreach and home delivery service to increase the number of SNAP recipients using Local Foods Plymouth.

Decrease community food waste by organizing field/garden gleaning events.

Build a third NH Solar Shares community PV array in the Holderness Center Harbor area.



TO DO LIST

- ☐ Increase your PAREI membership level to Partner or Supporter
- ☐ Volunteer at the Solar Education Trail workdays or help maintain the edible gardens.
- ☐ Volunteer to deliver LFP food orders within 10 miles of Plymouth.
- ☐ Donate to the Endowment Fund: plymouthenergy.org/donate.
- ☐ Sign up for a solar site visit for a residential solar PV installation.
- ☐ Attend a Little Gardens Everywhere workshop. To stay updated, e-mail: littlegardensnh@plymouthenergy.org
- ☐ Join the PAREI development committee or board of directors.

Plymouth Area Renewable Energy Initiative
79 Highland Street
PO Box 753
Plymouth, NH 03264
603-536-5030

sandra@plymouthenergy.org
nhsolarshares@plymouthenergy.org
localfoodsplymouth@gmail.com
littlegardensnh@plymouthenergy.org

plymouthenergy.org
localfoodsplymouth.org
nhsolarshares.org
@littlegardensnh